



Rinspeed Senso Case Study

For the fifth consecutive year, we designed and realized the 3D virtual model for the Rinspeed-Bayer Showcar 2005! The stealth-design inspired "SENSO" is a 3-seats-cabriolet, has a central driving position and features an interactive interior. It's world premiere will be at the Geneva Motor Show, at the beginning of March 2005.

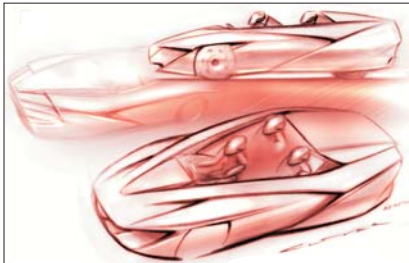
Lateral thinking, looking at things from a new angle, thinking out of the box and feeding the senses - sight, touch, feel, smell and hearing - these are major elements of the development work that has gone into the "Rinspeed Senso". Its name reflects what it actually does. The "Senso" "senses" the driver and adjusts to him/her. This is especially important as the risk of an accident is significantly reduced if the person behind the wheel is relaxed and wide awake.

The environmentally friendly "Senso", which runs on CO2-reducing natural gas, puts the central focus on the driver as an individual and appeals to the emotions thanks to its unusual design. It also features an innovative outer skin coating.

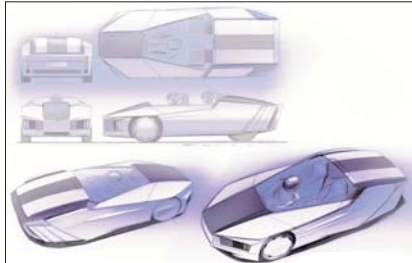
12/04

Protoscar

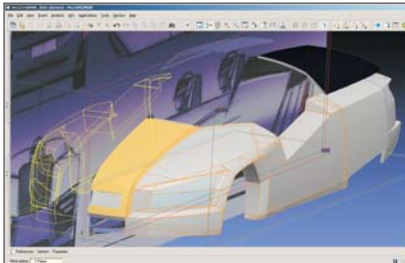
3D DIGITAL SOLUTIONS



First step: early stylish sketches



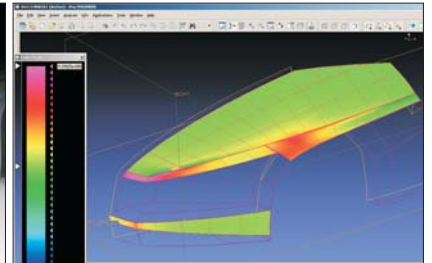
Direction change to more architectural shapes



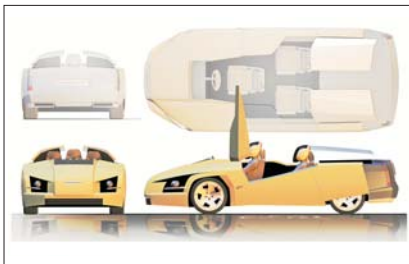
3D CAS modelling: in Pro/E Wildfire inserted sketch



Quick 3D rendering for design evaluation and presentations of an intermediate shape study.



Surface quality control for the design development and the prototype realization



Orthogonal views and ergonomic evaluation.



3D rendering to show the dynamic expression of the nearly defined shape



Rear view of the innovative architecture, specially showing the reverse doors opening



Image of the edgy car side, done with Pro/E Advanced Rendering



Rendering of the final prototype model in comparison to an early approach